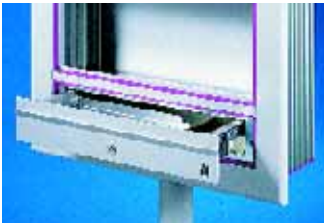
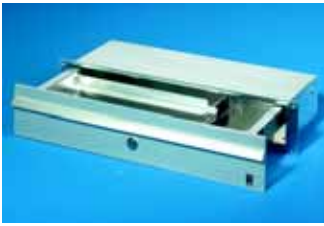


# Human/machine interface

## Drawers for keyboards



### Keyboard drawer 19 1/2 U for keyboard and mouse

#### For installation in:

- Comfort Panel<sup>1)</sup>  
(from an installation depth **A2** = 152 mm, see page 198).
- VIP 6000 Command Panel<sup>1)</sup>  
(all installation depths **1** to **9**, see page 217).
- Optipanel command panel<sup>1)</sup>  
(installation depth **3** = 150 mm, see page 207).
- Any sufficiently large surface  
(e.g. door, side panel).
- 482.6 mm (19") systems.

#### Suitable for

- Accommodation of keyboards up to max. 390 x 32 x 139 mm.
- Support of standard commercially available mouse or trackball.

#### Design:

- Drawer:
  - with stay
- Front panel
  - with security lock (lock no. 12321)
  - with handle strip

Width mm	Height	Depth mm	Model No. CP
482.6 (19")	2 U	150	<b>6002.000</b>

#### Material:

Drawer housing:  
Sheet steel, zinc-plated, passivated  
Drawer and front panel:  
Aluminium, natural-anodised.

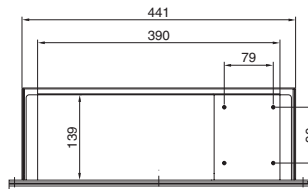
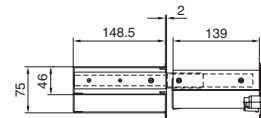
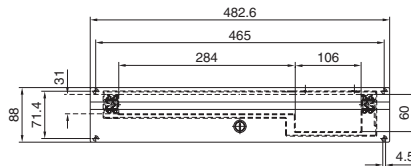
#### Supply includes:

Assembly parts for installation in Comfort Panel/  
VIP 6000/Optipanel command panels.



#### Also required:

- <sup>1)</sup> For sub-division of the operating front:
- Comfort Panel requires one cross member (see page 199, version 2.2).
  - VIP 6000 requires one cross member (recommended) or sealing bar (see page 218, version 3.2).  
At the same time, the end trim (see page 219, version 3.4) must be selected.
  - Optipanel requires one cross member (see page 208, version 2.2).



#### Mounting cut-out (for installation in surfaces)

