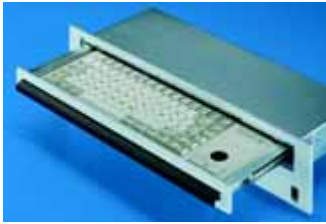


# Human/machine interface

## Monitors, keyboards



### Keyboard, pull-out

#### with integral trackball

Super-slimline keyboard with cursor keys and trackball.

For installation in:

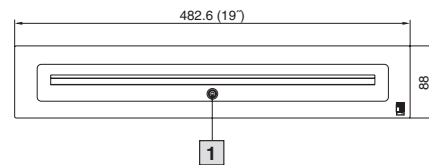
- Command panels VIP 6000 (see page 161) and Optipanel (see page 173) from installation depth 150 mm
- 482.6 mm (19") systems
- Any sufficiently large surface (e.g. door, side panel)

#### Technical specifications:

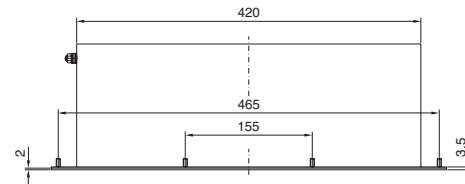
- Keyboard:
  - 84 short-stroke keys, IBM-AT compatible (MF2), including cursor keys
  - With integral 16 mm trackball
  - German layout
  - Interface:
    - 2 x 6-pole PS/2 DIN connector
  - Operating temperature: +5°C to +50°C
  - Storage temperature: -10°C to +60°C
  - Humidity: max. 95 % (no condensation)
- Front panel made from aluminium, with film similar to RAL 7035

#### Protection category:

IP 65 (at the front, closed)  
to EN 60 529/10.91



1 Optional lock (CP 6002.110)



	Packs of	Model No. CP
Without lock	1	6002.100
With lock	1	6002.110

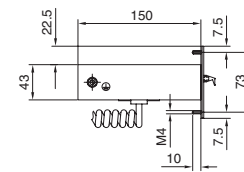
#### Note:

For sub-division of the operating front, a cross member is required for:

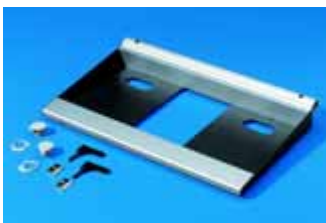
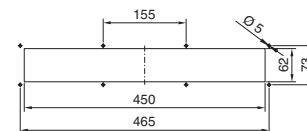
- VIP 6000 (see page 162, version 3.2). At the same time, the end trim (see page 163, version 3.4) must be selected.
- Optipanel (see page 174, version 2.2).

#### + Accessories:

Standard double-bit lock insert may be exchanged for 27 mm lock inserts, version A, see page 888, and lock cylinders, version B, see page 889.



Mounting cutout



### Support

#### for keyboards

for max. 473 x 210 mm.

Prepared for

- Cable gland
- Support for mousepad, vertically hinged (SM 2383.020)

#### Material/surface finish:

Side parts: Sheet steel, RAL 7024

Front and rear:

Extruded aluminium section, natural anodised

#### Supply includes:

2 clamping screws, end stoppers, cover plate, cable entry grommet and nylon loop tape.

#### ✎ Rittal service:

Other widths available on request.  
Fully mounted on the VIP 6000 (see page 160) or the Optipanel (see page 173) via the design code number.

Packs of	Model No. SM
1 set	2383.000

#### ! Also required:

For mounting on surfaces:  
enclosure surface connector,  
see page 1034.

#### + Accessories:

Support for mousepad, vertically hinged,  
see page 1055.

#### Detailed drawing

for VIP 6000,  
see page 1100,  
for Optipanel,  
see page 1102.