



### Compact light

#### Narrower – Faster – Brighter

- **Narrower:** Around 50 % less height and depth and also around 75 % less volume than conventional lights.
- **Faster:** Universal fast attachment via clips, screws, or powerful magnets (optional). Simply slide in at the side or rear, fit the light, and it's done!
- **Brighter:** Up to 75 % greater luminous efficiency from the lamp at the same output helps to cut electricity costs.
- Door-operated switch can also be connected via a 2-pole connection.
- Cable routing on the back of the light enables deflection, e. g. when mounted vertically in a TS 8.

#### Material:

Body:  
PC-ABS (halogen-free)  
Light cover:  
Polycarbonate (halogen-free)

#### Colour:

Similar to RAL 7035

#### Protection category:

IP 20

#### Supply includes:

Compact light with clip and screw mounting kits, including assembly parts.



#### Accessories:

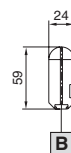
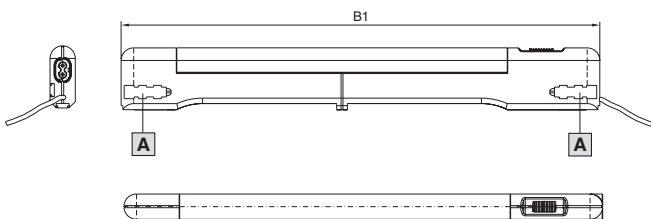
Mounting kit magnet, see below.

Door-operated switch with connection cable, see below.

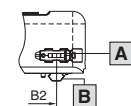
Model No. SZ	4140.010	4140.020	4140.110	4140.120
<b>Rated voltage</b>	100 – 240 V AC ±10 % at 50 – 60 Hz		24 V DC ±10 %	
Wattage	8	14	8	14
Protection category	II (all-insulated)			
Width (B1) mm	455	705	455	705
Mounting distance (B2) mm Clip/magnet	400	650	400	650
Mounting distance (B3) mm	475	725	475	725
Connection cable	3 m (open end)			
Cover colour	Yellow			
Rated current (A)				
– at 230 V AC	0.045 – 0.088	0.073 – 0.127	–	–
– at 110 V AC	0.083 – 0.149	0.149 – 0.216	–	–
– at 24 V DC	–	–	0.35	0.57
Light	Fluorescent lamp T5			
Operating unit	Wide-range electronic ballast		Electronic ballast	
Switches	Integral, on/off/door-operated switch mode			
Light cover	Transparent, grooved on the inside			
ENEC 24	■	■	■	■

**A** Side attachment

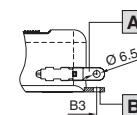
**B** Rear fastening



Clip/magnet attachment



Screw attachment



### Mounting kit magnet

For reliable adhesion on all sheet steel surfaces.



Packs of	Model No. SZ
2	4140.000

### Door operated switch

With connection cable

Colour:  
Yellow



Length mm	Packs of	Model No. SZ
600	1	4315.700