

### Rail

#### for EMC shielding bracket and strain relief

Combined rail for strain relief and EMC contacting of inserted cables.

#### Mounting options

- On the horizontal/vertical TS, SE, PC enclosure section
- On a mounting plate  
May also be fitted without a retaining bracket

Additional contacting on the left or right of the rail via existing holes (9 mm diameter)

#### Material:

- Sheet steel

#### Surface finish:

- Zinc-plated

#### Supply includes:

- 1 rail
- 2 retaining brackets
- Assembly parts

Width mm	Packs of	Model No.
600	1 pc(s).	<b>2388.600</b>
800	1 pc(s).	<b>2388.800</b>
1000	1 pc(s).	<b>2388.000</b>
1200	1 pc(s).	<b>2388.120</b>



#### Also required:

- EMC shielding bracket, see page 641
- Cable clamps for strain relief, see page 666

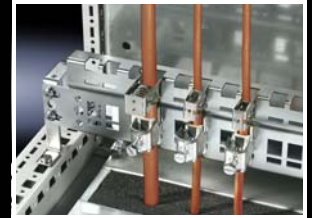
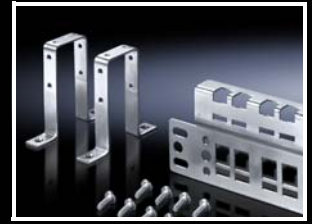


#### Accessories:

- Earth straps, see page 644
- Earthing braid, see page 644

#### Technical details:

Available on the Internet



### EMC shielding bracket

Quick assembly without the use of tools:

Press the EMC shielding bracket against the cable shield and clip into the rail.

Diameter changes are compensated in full by the spring of the EMC shielding bracket.

#### Material:

- Sheet steel

#### Surface finish:

- Zinc-plated

For shield diameter mm	Packs of	Model No.
3 – 10	10 pc(s).	<b>2388.100</b>
4 – 15	10 pc(s).	<b>2388.150</b>
10 – 20	10 pc(s).	<b>2388.200</b>
15 – 28	10 pc(s).	<b>2388.280</b>



### EMC gland plates

For shielded cables with a maximum diameter of 20 mm.

Combined EMC/IP seal provides low-resistance contact between cable shield and gland plate.

For all 400, 500, 600 and 800 mm deep enclosures in conjunction with standard gland plates.

#### Material:

- Sheet steel

#### Surface finish:

- Zinc-plated

#### Supply includes:

- 1 gland plate with T-head punching
- 1 sliding gland plate
- 2 IP/EMC gaskets

Width mm	Packs of	Model No.
600	1 set(s)	<b>8800.660</b>
800	1 set(s)	<b>8800.680</b>
1000	1 set(s)	<b>8800.600<sup>1)</sup></b>
1200	1 set(s)	<b>8800.620<sup>1)</sup></b>

<sup>1)</sup> For one enclosure half only

