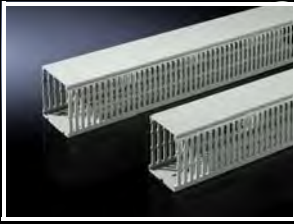


# Cable management



## Cable duct

- With special DIN punchings for direct mounting on the enclosure section or on surfaces such as mounting plates.
- If the mounting plate is installed flush with the enclosure frame at the rear (installation position  $\pm 0$  mm), the horizontally mounted cable ducts are aligned with the cable ducts mounted on the enclosure section.
- Cable duct 50 mm wide for individually sited VX25 enclosures with side panel on the vertical section, on the left and right adjacent to the mounting plate.
- Cable duct 100 mm for mounting on the vertical enclosure frame with bayed enclosures.

### Technical specifications:

- Depth: 80 mm
- Length: 2000 mm, may be cut to length
- Bar width: 5.5 mm
- Slot width: 4.5 mm

### Material:

- Hard PVC
- Flame-resistant, self-extinguishing
- Temperature resistant to +60°C

Width (B) mm	P. of	Model No.
30	24 pc(s).	<b>8800.750</b>
40	20 pc(s).	<b>8800.751</b>
50	18 pc(s).	<b>8800.755</b>
60	18 pc(s).	<b>8800.752</b>
80	12 pc(s).	<b>8800.753</b>
100	12 pc(s).	<b>8800.754</b>

### Colour:

- Similar to RAL 7030



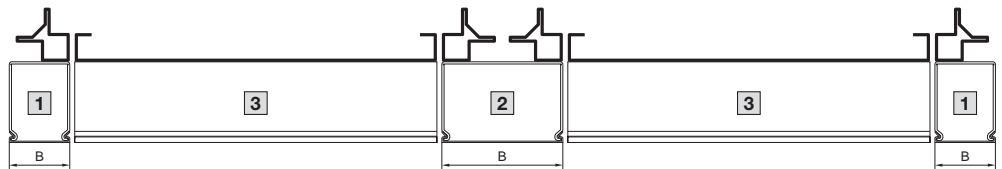
### Accessories:

- Metal multi-tooth screw 5.5 x 13 mm, see page 158
- Isolator cap, see page 186

**1** = W 50 mm

**2** = W 100 mm

**3** = W 30 to 100 mm



## Isolator cap

### for screw head

To isolate screw heads within the cable duct.

### Material:

- Plastic

P. of	Model No.
100 pc(s).	<b>8800.770</b>